

## REDUCE CABLE BENDING AND PREVENT CABLE DAMAGE.

### EVERFLEX™ Bending Strain Relief A cable “LIFE-SAVER”

The EVERFLEX™ BSR extends cable life significantly for fixed, towed, and moored systems and many other oceanographic and offshore petroleum applications.

- No prep work is required to install and full installation takes minutes with a slip-on design
- Two models are available: internally threaded sleeve coupling or modified pipe flange mounting ring
- Secures with the appropriate fastening mechanism
- Light duty models also available

By controlling bending stresses and strains at rigid attachment points and limiting the bending radius, stress is reduced in the critical transition area where flexible cable interfaces with rigid attachments.

In laboratory tests, double armored electro-mechanical cables have failed under severe bend conditions in about 5,000 cycles (less than 24 hours of continuous flexing). With an EVERFLEX™ Bending Strain Relief, under identical loading conditions, the cable life exceeded half a million cycles.

Under high loads and large angle deflections, cable bending is controlled by increasing stiffness of heavier sections of the EVERFLEX™ Bending Strain Relief near the rigid attachment point.

With an EVERFLEX™ Bending Strain Relief, the point of maximum bending travels along the length of the cable within the Bending Strain Relief as load conditions vary. This distributes the otherwise localized bending conditions to increase cable life.



**Top:** Install by slipping onto cable then securing to the PMI termination.

**Middle:** EVERFLEX™ BSR attached to the EVERGRIP™ Termination.

**Bottom:** Flange mount EVERFLEX™ BSR applied to cable and prepared for shipment.

The **EVERFLEX™ Bending Strain Relief** is symmetrical in design and omnidirectional in performance. It protects your cable independently of the direction in which off-axis load is applied.

Designed to ease the cable transition from flexible to rigid and control bending radius, it is very flexible at the mouth to maintain a gentle contour in the cable as it enters the BSR.

By adjusting design parameters, the stiffness of the EVERFLEX™ Bending Strain Relief can be tailored to the specific needs of your cable system.

### TECHNICAL SUPPORT

If you have questions or concerns about any PMI product, please contact our engineering staff directly.

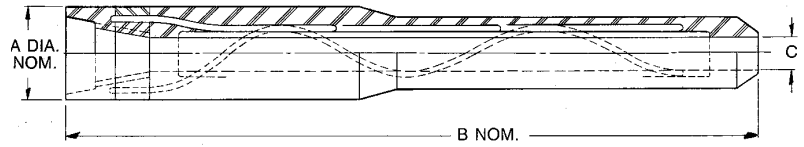
#### PMI Industries, Inc.

5300 St. Clair Avenue

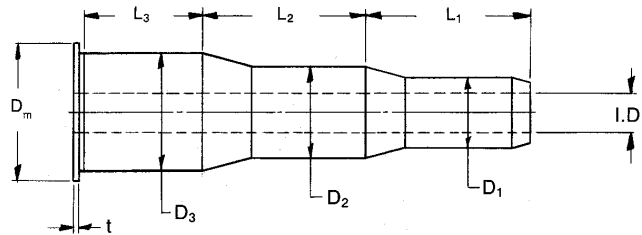
Cleveland, Ohio 44103 USA

+1 216 881 4914

sales@pmiind.com



DEF SERIES					
(For use with EVERGRIP™, DYNA-GRIP® and FARMOR™ Terminations)					
DASH No.	APPROX. CABLE DIA. RANGE (in.)		A (in.)	B (in.)	C (in.)
1	0.194	0.244	1.13	8.50	0.41
2	0.245	0.308	1.38	11.00	0.52
3	0.309	0.388	1.88	13.75	0.65
4	0.389	0.487	2.13	17.62	0.81
5	0.488	0.611	2.63	21.75	1.00
6	0.612	0.765	3.38	26.75	1.25
7	0.766	0.957	3.90	38.62	1.50
8	0.958	1.197	4.52	43.25	1.88



9003547 SERIES					
(For Use On Large Cables & Hose Bundles)					
Size	I	II	III	IV	V
Approx. Cable Range	0.75- 1.12	1.12- 1.75	1.75- 2.50	2.50-3.50	3.50-5.00
ID	1.25	2.00	2.75	3.87	5.38
D <sub>3</sub>	5.5	7.0	9.0	11.5	14.0
D <sub>2</sub>	4.0	5.5	7.0	9.0	11.5
D <sub>1</sub>	3.0	4.0	5.5	7.0	9.0
L <sub>3</sub>	11	14	18	23	29
L <sub>2</sub>	9	12	16	20	25
L <sub>1</sub>	12-18	16-24	20-30	25-38	33-50
D <sub>m</sub>	6.23	7.73	9.98	12.98	15.48
t	0.45	0.50	0.63	0.83	1.00
Min. Bend Radius	48	64	76	92	113
Off-Axis Load @ 50° (K-Lbs)	1.5	3.0	5.0	7.0	9.0

