

EVERGRIP™ TERMINATION

A Field Installable Termination for Securing Your Investment

PRODUCT DESCRIPTION

Full strength, reusable mechanical termination designed to match breaking strength of cable. Protects against fatigue of your cable system under severe dynamic loading. Optional, matched design accessories can add extra bend protection and splicing capabilities.

ACCESSORIES

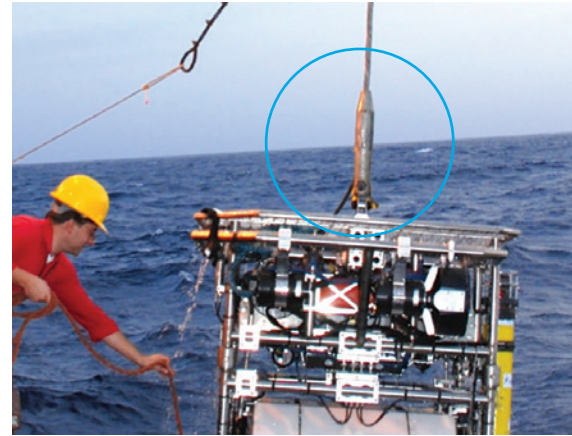
- DYNA-GRIP® An epoxy potted EVERGRIP.
- FARMOR™ An EVERGRIP with no helical rods if length clearance is an issue.
- EVERFLEX™ Bending strain relief attaches to nose of the housing to relieve concentrated stresses at the rigid termination point.
- DAM/BLOK™ Electrical splice kit is a field installable, reliable electrical splice to the connector pigtail or another cable.

APPLICATIONS

- ROV terminations
- Buoy
- Towed side scan
- CTDs
- Rosettes
- Moored Devices

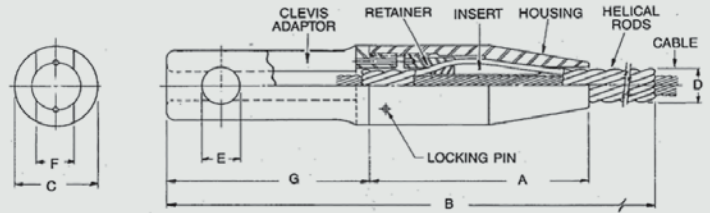
FEATURES AND BENEFITS

- EVERGRIP termination can be field installed on you cable for immediate use without the need of special tools
- The housing, retainer and adaptor are durable and reusable for a cost-effective solution
- Re-termination Kit is also field installable including new rod set, insert and locking pin to keep downtime to a minimum
- Full strength to hold to breaking strength of the cable
- Cable extends through the termination intact without cutting or modification of the cable



EVERGRIP TERMINATIONS

PMI EVERGRIP Termination is available for Left Hand Lay or Right Hand Lay armored cable. The lay of the cable must match the lay direction of the helical rods included with the kit. If jacketed cable is being used, please contact PMI.



*Clevis adaptors shown; flange and bolt, and custom on adaptors also available

EVERGRIP TERMINATION

- Housing
- Retainer
- Adaptor
- Clevis Pin Assembly
- Hex Keys
- Helical Rod Set
- Insert
- Locking Pin
- Application Procedures
- Anti-seize Compound

RETERMINATION KIT

- Helical Rod Set
- Insert
- Locking Pin
- Application Procedures
- Anti-seize Compound

A partial list of EVERGRIP terminations are shown; other sizes are available - please contact PMI. Table is shown in English measurement units.

MODEL #	DASH #	CABLE RANGE (IN.)	DASH #	CABLE RANGE (IN.)	RATED HOLDING STRENGTH (K-LBS)	BODY LENGTH W/O ADAPTOR (A)	TOTAL LENGTH (IN.) (B)	BODY DIAMETER (IN.) (C)	DIAMETER OVER RODS (IN.) (D)	PIN DIAMETER (IN.) (E)	CLEVIS SLOT WIDTH (IN.) (F)	CLEVIS ADAPTOR LENGTH (IN.) (G)	EVERFLEX BSR*
		(MIN. - MAX.)		(MIN. - MAX.)									
114		0.194 - 0.201		0.202 - 0.209	6.4		20		.350				
115	-2	0.210 - 0.217	-3	0.218 - 0.226	6.4	3.47	21	1.125	.367	.438	.470	3.40	9005300-1
116		0.227 - 0.235		0.236 - 0.244	7.0		22		.385				
117		0.245 - 0.254		0.255 - 0.264	9.3		25		.444				
118	-2	0.265 - 0.274	-3	0.275 - 0.285	9.3	4.46	27	1.375	.465	.562	.560	4.23	9005300-2
119		0.286 - 0.296		0.297 - 0.308	10.2		28		.488				
120		0.309 - 0.320		0.321 - 0.333	14.4		32		.565				
121	-2	0.334 - 0.346	-3	0.347 - 0.359	16.0	5.57	34	1.875	.571	.750	.700	5.36	9005300-3
122		0.360 - 0.373		0.374 - 0.388	17.6		35		.620				
123		0.389 - 0.403		0.404 - 0.418	22.6		40		.702				
124	-2	0.419 - 0.434	-3	0.435 - 0.451	22.6	6.87	41	2.125	.735	.875	.845	6.60	9005300-4
125		0.452 - 0.469		0.470 - 0.487	24.9		43		.771				
126		0.488 - 0.506		0.507 - 0.525	35.2		50		.879				
127	-2	0.526 - 0.540	-3	0.541 - 0.566	35.2	8.45	52	2.625	.920	1.000	1.105	8.00	9005300-5
128		0.567 - 0.588		0.589 - 0.611	38.7		53		.965				
129		0.612 - 0.634		0.635 - 0.658	45.3		60		1.103				
130	-2	0.659 - 0.684	-3	0.685 - 0.710	49.9	10.32	63	3.75	1.128	1.250	1.365	10.10	9005300-6
131		0.711 - 0.737		0.738 - 0.765	49.9		66		1.189				
132		0.766 - 0.794		0.795 - 0.824	68.7		76		1.312				
133	-2	0.825 - 0.856	-3	0.857 - 0.888	68.7	12.55	78	4.000	1.376	1.500	1.625	12.50	9005300-7
134		0.889 - 0.922		0.923 - 0.957	75.0		82		1.445				
135		0.958 - 0.994		0.995 - 1.032	81.2		90		1.520				
136	-2	1.033 - 1.071	-3	1.072 - 1.111	87.5	15.13	93	4.500	1.599	1.750	1.875	15.10	9005300-8
137		1.112 - 1.154		1.155 - 1.197	87.5		98		1.685				

*Modification of the housing is required before use.

ORDERING EXAMPLE FOR 0.250" LEFT HAND LAY CABLE= 117-2C-L

117-	2	C-	L
MODEL NO. DASH NO.	Based on Cable Diameter	KIT STYLE C = Complete R = Retermination M = Modified Housing O = w/o Adaptor	LAY DIRECTION OF CABLE & RODS Left or Right

TECHNICAL SUPPORT

If you have questions or concerns about any PMI product, please contact our engineering staff directly.
PMI Industries, Inc. | 5300 St. Clair Avenue | Cleveland, Ohio 44103 USA | +1 (216) 881 4914 | sales@pmiind.com

